



LM-79 Test Report

Relevant Standards

IES LM-79-2008
IES TM-30-2015
CIE 13.3-1995
IESNA TM-15-11
CIE 117:1995

Product SKU

BLAZE™ LED Tape Light
DI-24V-BLBSC3-40

Test Conditions

Test Temperature: 26.5 °C
Luminaire Sample Length: 1000 mm.
Power Supply: Agilent E3634A DC Power Supply
Voltage: 24.0 VDC
Current: 0.477 A
Power Consumption: 11.4 W

Test Date

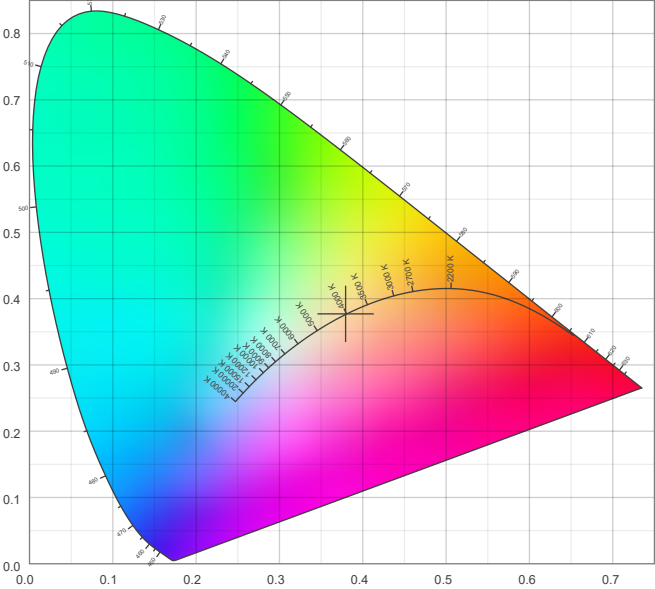
10/21/2025

Color Details

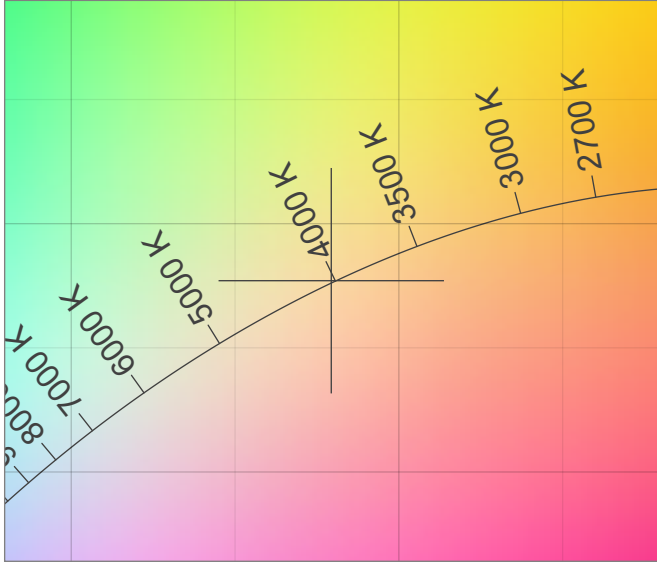
Correlated Color Temperature	CCT = 4036
CIE Test Color Method General Index	CRI = 93.0
CIE Test Color Method Sample Nine Score	R9 = 64.2
IES TM-30-15 Fidelity Index	R _f = 90.3
IES TM-30-15 Gamut Index	R _g = 97.8
Luminous Flux	Lm = 1212

Color coordinates CIE 1931	(x;y) = (0.379;0.377)
Color coordinate CIEs 1960	(u;v) = (0.224;0.334)
Color coordinate CIEs 1976	(u';v') = (0.224;0.502)
Color deviation from BBL	Duv = 0.0005
Color Quality Scale (CQS)	CQS = 91.6

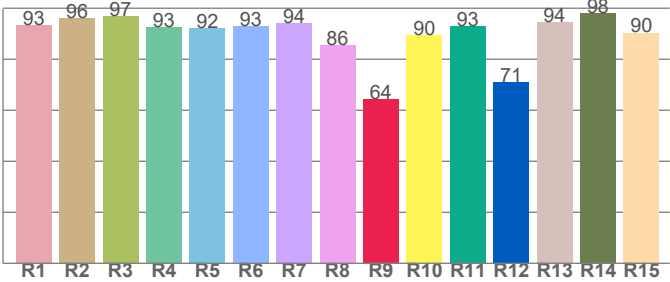
CIE 1931



CIE 1931 – zoomed on Planckian locus



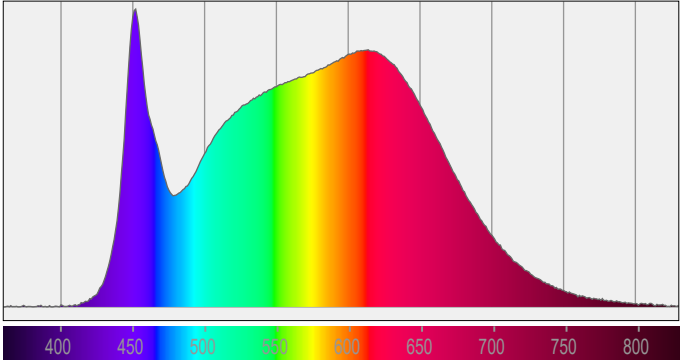
Color Rendering Index per Reference Color (CIE 1995)



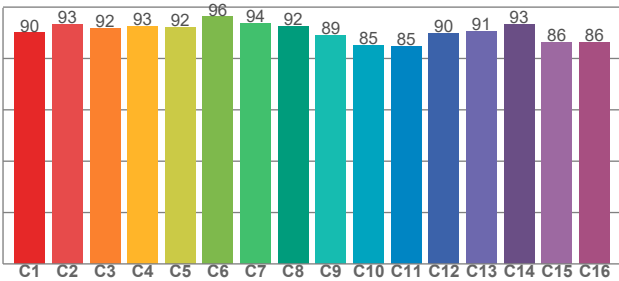
CRI R values, only R1-R8 are used to calculate final CRI value

R1	R2	R3	R4	R5	R6	R7	R8	R9	R10	R11	R12	R13	R14	R15
93.3	96.2	97.0	92.6	92.2	93.1	94.0	85.7	64.2	89.6	92.8	71.0	94.4	98.0	90.4

Spectral Power Distribution (SPD) / W/nm – 0-100%



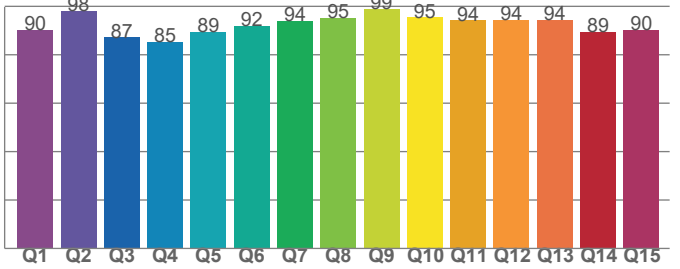
TM30-18 Rf-Values per Hue Bin



TM30 C values, 16 binned values out of total of 99 C values

C1	C2	C3	C4	C5	C6	C7	C8	C9	C10	C11	C12	C13	C14	C15	C16
90.0	93.2	91.6	92.7	92.3	96.3	93.8	92.5	89.0	85.3	84.8	89.8	90.6	93.2	86.3	86.3

Color Quality Scale by Reference Color



CQS Q values

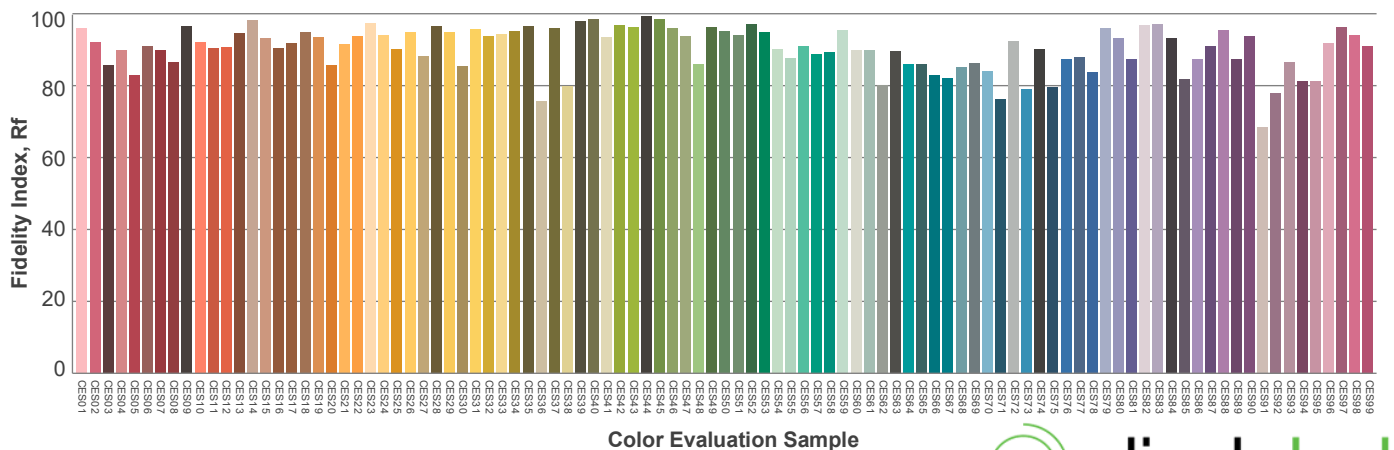
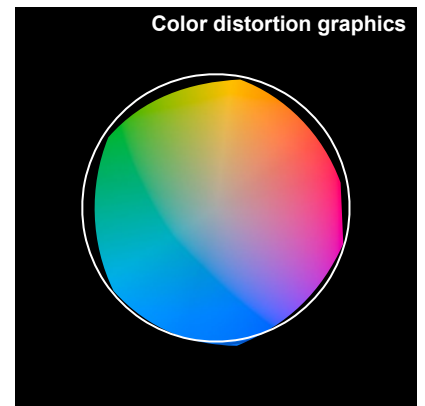
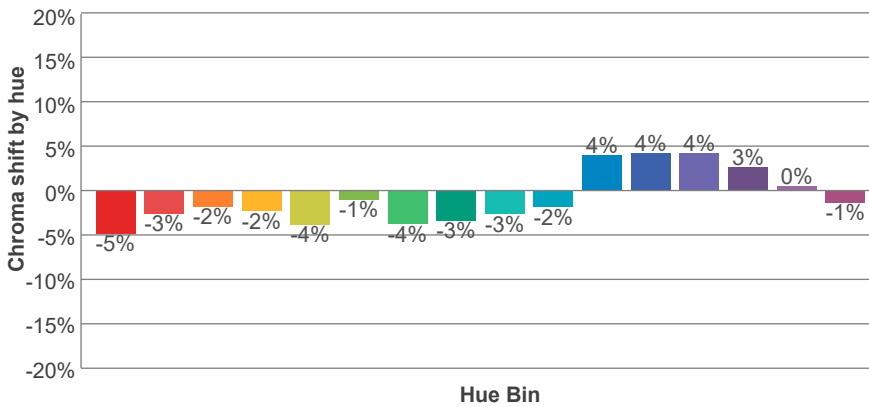
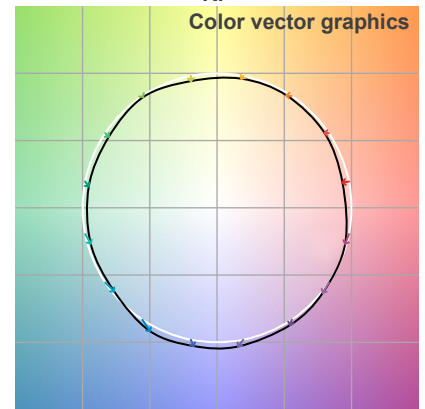
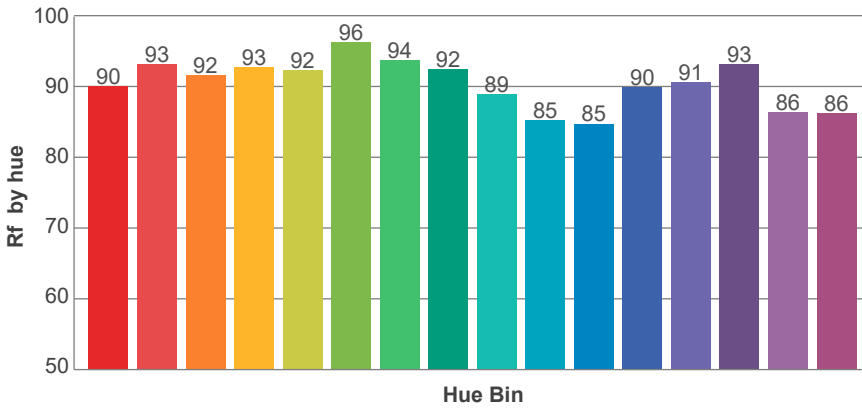
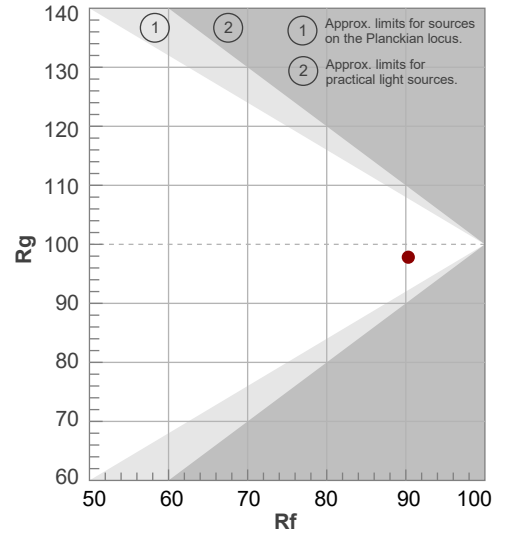
Q1	Q2	Q3	Q4	Q5	Q6	Q7	Q8	Q9	Q10	Q11	Q12	Q13	Q14	Q15
90.3	98.1	87.2	85.3	89.5	91.7	93.9	95.2	98.8	95.4	94.2	94.2	94.2	89.4	90.1



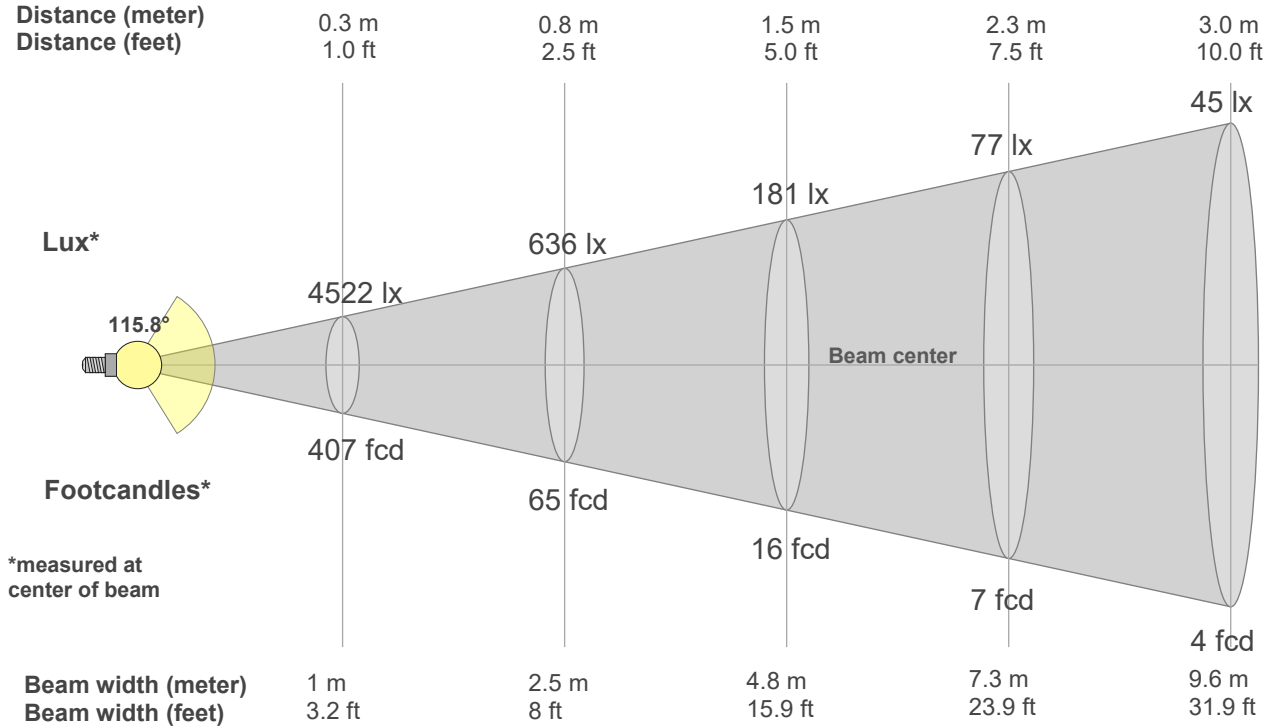
Rf 90.3
Fidelity index Rf

Rg 97.8
Gamut index Rg

Hue Bin	R _f	Shifts (%)	
		Chroma	Hue
1	90	-5%	0%
2	93	-3%	2%
3	92	-2%	4%
4	93	-2%	1%
5	92	-4%	1%
6	96	-1%	0%
7	94	-4%	1%
8	92	-3%	3%
9	89	-3%	8%
10	85	-2%	9%
11	85	4%	10%
12	90	4%	3%
13	91	4%	-5%
14	93	3%	-3%
15	86	0%	-9%
16	86	-1%	-8%



Beam Details



Beam Intensities from 1-20m

1m	2m	3m	4m	5m	6m	7m	8m	9m	10m	11m	12m	13m	14m	15m	16m	17m	18m	19m	20m
3.3ft	6.6ft	9.8ft	13.1ft	16.4ft	19.7ft	23ft	26.2ft	29.5ft	32.8ft	36.1ft	39.4ft	42.7ft	45.9ft	49.2ft	52.5ft	55.8ft	59.1ft	62.3ft	65.6ft
407lx	102lx	45lx	25lx	16lx	11lx	8lx	6lx	5lx	4lx	3lx	3lx	2lx	2lx	2lx	2lx	1lx	1lx	1lx	1lx
37.8fcd	9.5fcd	4.2fcd	2.4fcd	1.5fcd	1.1fcd	0.8fcd	0.6fcd	0.5fcd	0.4fcd	0.3fcd	0.3fcd	0.2fcd	0.2fcd	0.2fcd	0.1fcd	0.1fcd	0.1fcd	0.1fcd	0.1fcd

Intensities in 0° c-plane

0°	5°	10°	15°	20°	25°	30°	35°	40°	45°	50°	55°	60°	65°	70°	75°	80°	85°	90°	95°
407	405	401	394	382	369	352	332	309	283	254	223	189	154	117	81	47	19	0	0
100%	99%	99%	97%	94%	91%	86%	82%	76%	69%	63%	55%	46%	38%	29%	20%	12%	5%	0%	0%

Intensities in 90° c-plane

0°	5°	10°	15°	20°	25°	30°	35°	40°	45°	50°	55°	60°	65°	70°	75°	80°	85°	90°	95°
407	405	401	394	383	370	353	333	311	286	257	226	192	156	118	82	47	19	3	0
100%	99%	98%	97%	94%	91%	87%	82%	76%	70%	63%	55%	47%	38%	29%	20%	12%	5%	1%	0%

Intensities in 180° c-plane

0°	5°	10°	15°	20°	25°	30°	35°	40°	45°	50°	55°	60°	65°	70°	75°	80°	85°	90°	95°
407	405	400	392	381	366	349	329	306	281	253	222	189	155	119	83	49	22	6	0
100%	100%	98%	96%	94%	90%	86%	81%	75%	69%	62%	55%	47%	38%	29%	20%	12%	5%	2%	0%

Intensities in 270° c-plane

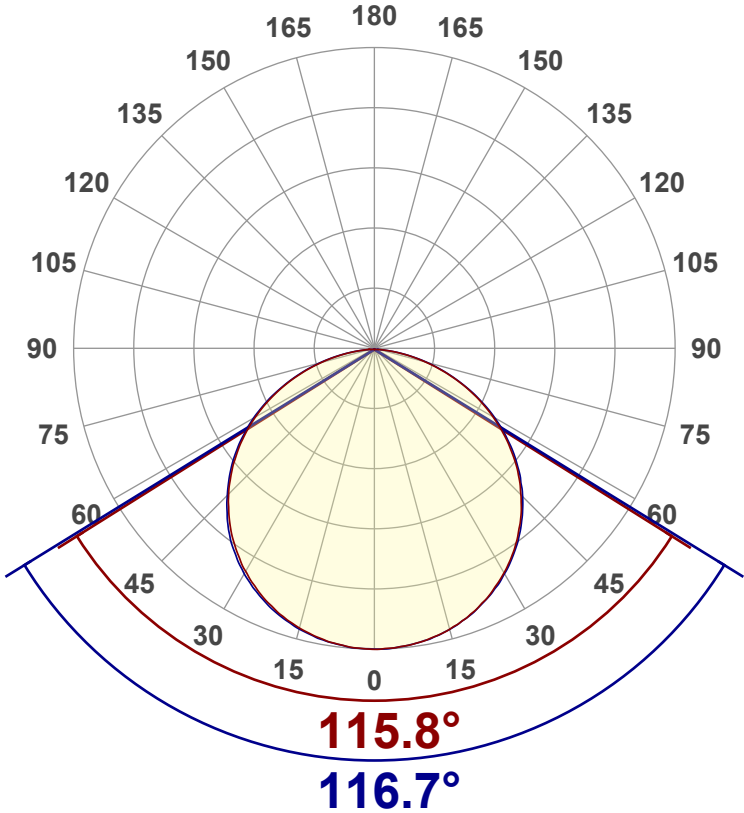
0°	5°	10°	15°	20°	25°	30°	35°	40°	45°	50°	55°	60°	65°	70°	75°	80°	85°	90°	95°
407	405	400	393	383	369	353	333	310	283	255	225	192	158	121	85	51	22	0	0
100%	100%	98%	97%	94%	91%	87%	82%	76%	70%	63%	55%	47%	39%	30%	21%	13%	5%	0%	0%

Beam angle 50%	Field angle 10%	Cutoff angle 2,5%	Intensity ratio in 120° cone	Intensity ratio in 90° cone
116.2°	162.7°	175.6°	78.1%	52.6%



Luminous Intensity Diagram

Unit: 0-100% of peak intensity



Main Values

Output (Total Lumen)	1212 lm
Lumen Up% / Down%	0.02% / 99.98%
Peak Intensity	408 cd
Beam Angle (50%)	116.2°
Beam Angle (90%)	116.7°
Beam Angle (10%)	115.8°

Cut-off Angle

Average 2,5%	175.6°
--------------	--------

Field Angle

Average 10%	162.7°
-------------	--------

Intensity Ratio

In 120° cone	78.1%
In 90° cone	52.6%

C000-C180 C090-C270

Zonal Lumen Summary

0°-10°	10°-20°	20°-30°	30°-40°	40°-50°	50°-60°	60°-70°	70°-80°	80°-90°
38.6 lm	111 lm	170 lm	208 lm	219 lm	200 lm	153 lm	87.4 lm	24.8 lm
90°-100°	100°-110°	110°-120°	120°-130°	130°-140°	140°-150°	150°-160°	160°-170°	170°-180°
0.268 lm	0.000 lm	0.000 lm	0.000 lm	0.000 lm	0.000 lm	0.000 lm	0.000 lm	0.000 lm



LCS Table

BUG rating:	B1 U0 G1	
Forward light	Lumens	Lumens %
Low(0-30):	160.1	13.2%
Medium(30-60):	313.7	25.9%
High(60-80):	120	9.9%
Very high(80-90):	12	1%
Back light		
Low(0-30):	159.6	13.2%
Medium(30-60):	313	25.8%
High(60-80):	120.9	10%
Very high(80-90):	12.9	1.1%
Uplight		
Low(90-100):	0	0%
High(100-180):	0	0%

LCS Graph

