



LM-79 Test Report

Relevant Standards

IES LM-79-2008
IES TM-30-2015
CIE 13.3-1995
IESNA TM-15-11
CIE 117:1995

Product SKU

VALENT® MINI 8MM LED Tape Light
DI-24V-VL8MN3-40

Test Conditions

Test Temperature: 26.5 °C
Luminaire Sample Length: 1000 mm.
Power Supply: Agilent E3634A DC Power Supply
Voltage: 24.0 VDC
Current: 0.414 A
Power Consumption: 9.9 W

Test Date

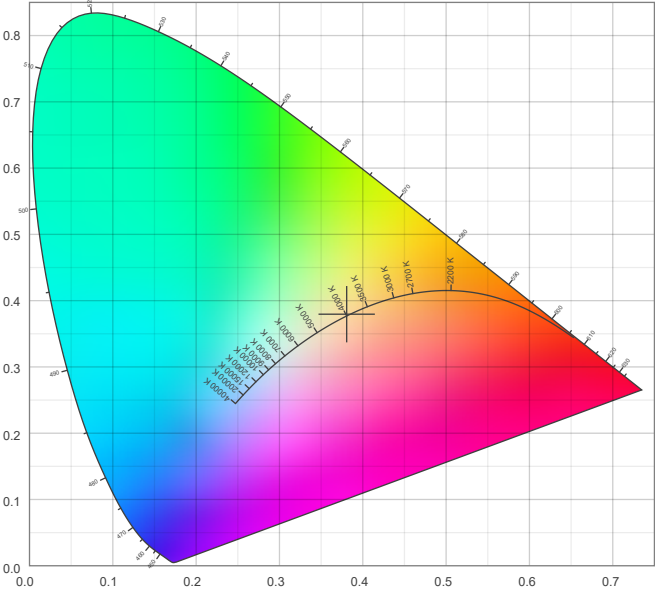
10/21/2025

Color Details

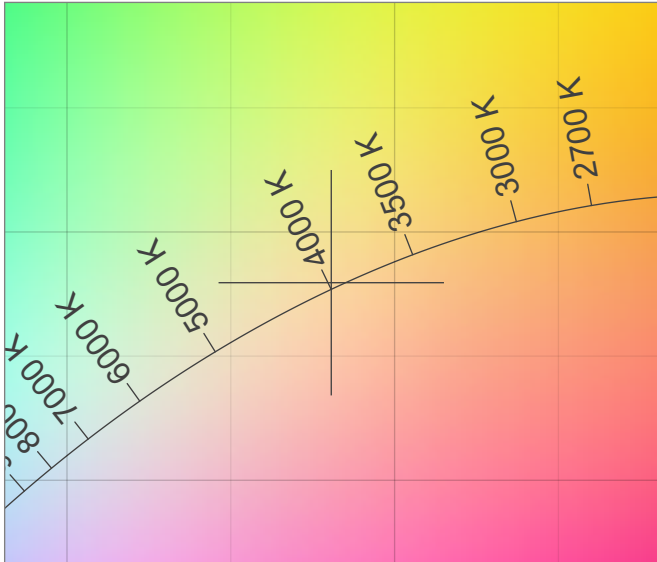
Correlated Color Temperature	CCT = 4019
CIE Test Color Method General Index	CRI = 91.5
CIE Test Color Method Sample Nine Score	R9 = 59.0
IES TM-30-15 Fidelity Index	R _f = 86.0
IES TM-30-15 Gamut Index	R _g = 93.2
Luminous Flux	Lm = 1473

Color coordinates CIE 1931	(x;y) = (0.381;0.380)
Color coordinate CIEs 1960	(u;v) = (0.224;0.335)
Color coordinate CIEs 1976	(u';v') = (0.224;0.503)
Color deviation from BBL	Duv = 0.0013
Color Quality Scale (CQS)	CQS = 89.8

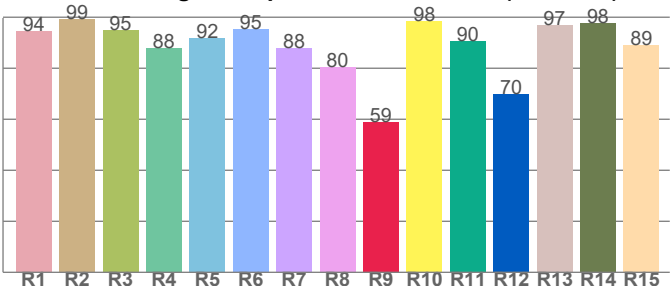
CIE 1931



CIE 1931 – zoomed on Planckian locus



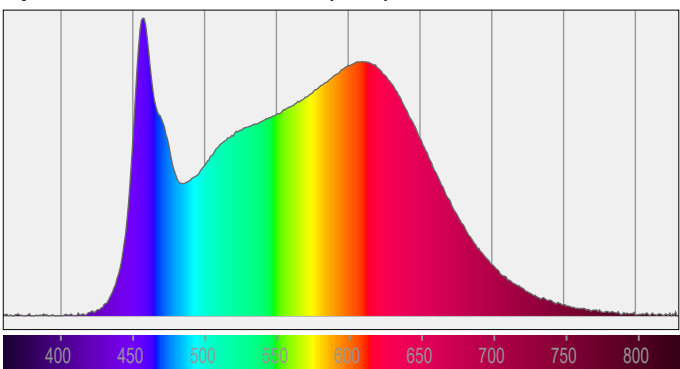
Color Rendering Index per Reference Color (CIE 1995)



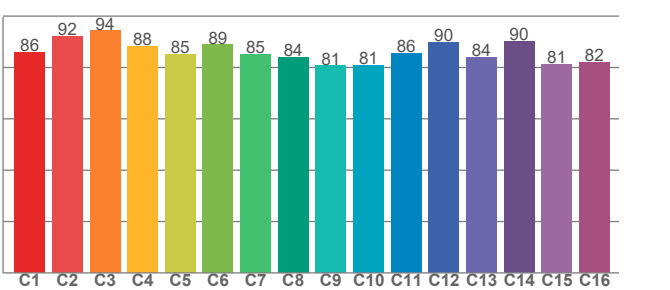
CRI R values, only R1-R8 are used to calculate final CRI value

R1	R2	R3	R4	R5	R6	R7	R8	R9	R10	R11	R12	R13	R14	R15
94.3	99.2	95.0	87.8	91.8	95.5	87.7	80.5	59.0	98.4	90.4	69.7	97.1	97.8	89.2

Spectral Power Distribution (SPD) / W/nm – 0-100%



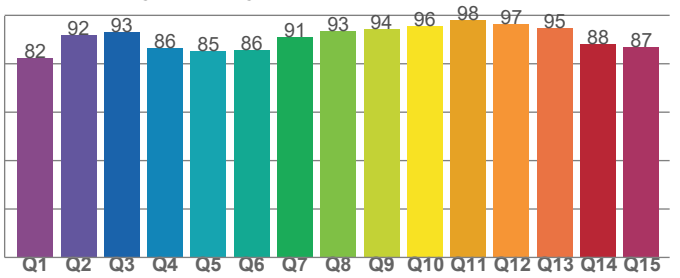
TM30-18 Rf-Values per Hue Bin



TM30 C values, 16 binned values out of total of 99 C values

C1	C2	C3	C4	C5	C6	C7	C8	C9	C10	C11	C12	C13	C14	C15	C16
86.0	92.2	94.2	88.4	85.1	88.8	85.1	83.9	80.7	80.8	85.5	89.7	84.0	90.1	81.1	82.1

Color Quality Scale by Reference Color



CQS Q values

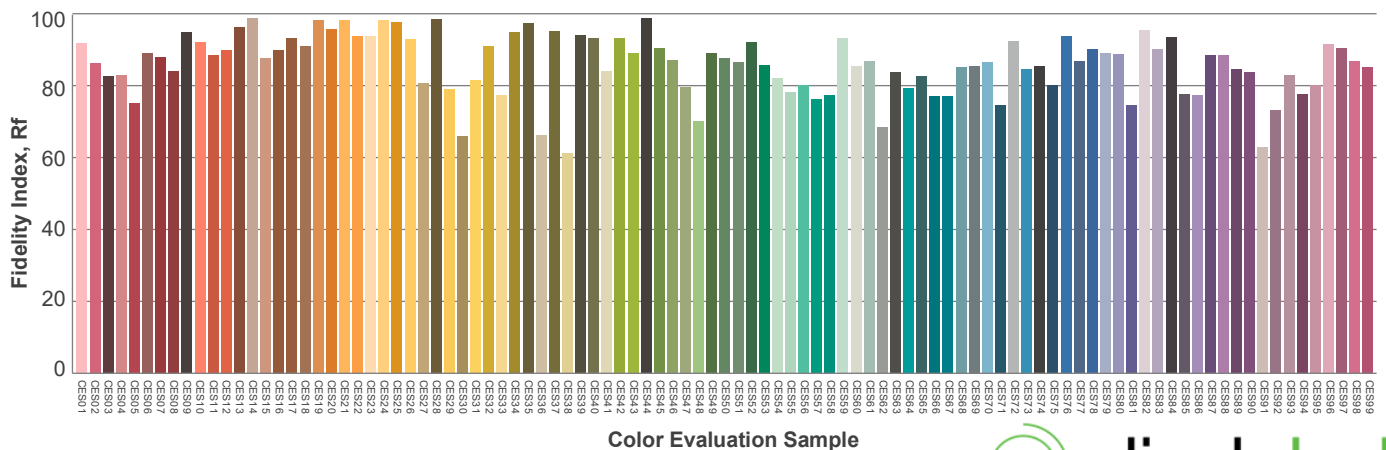
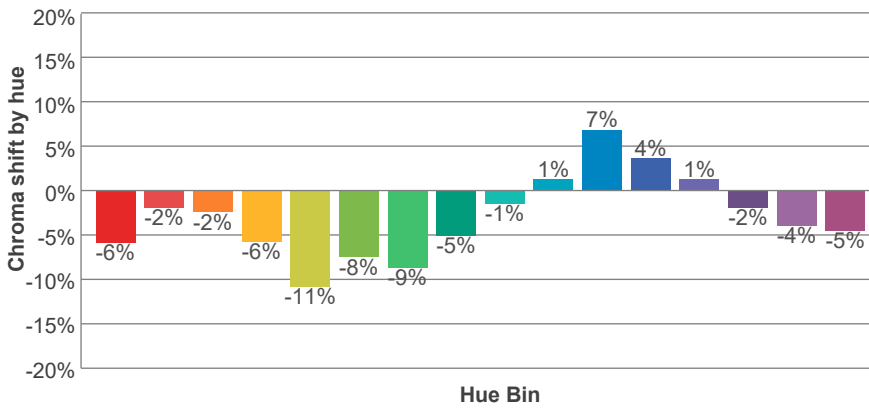
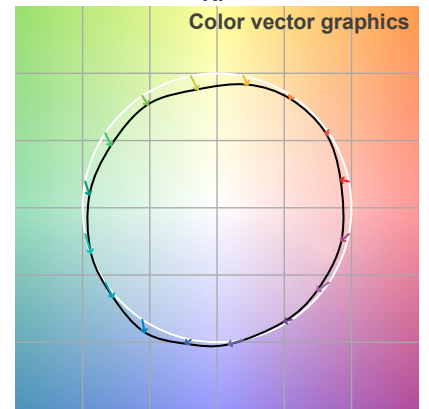
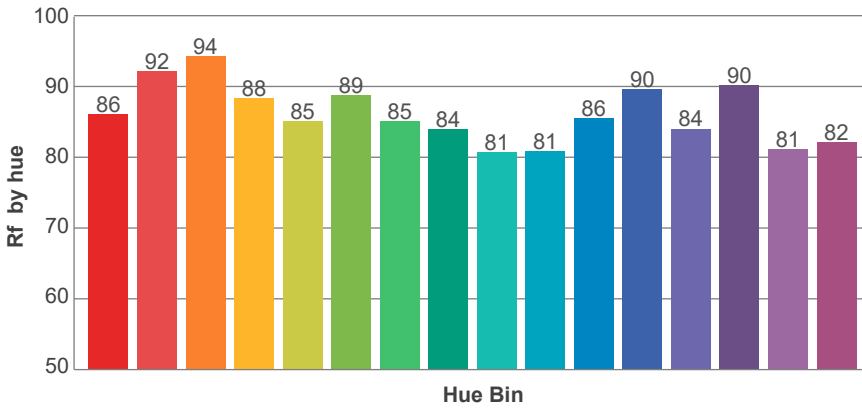
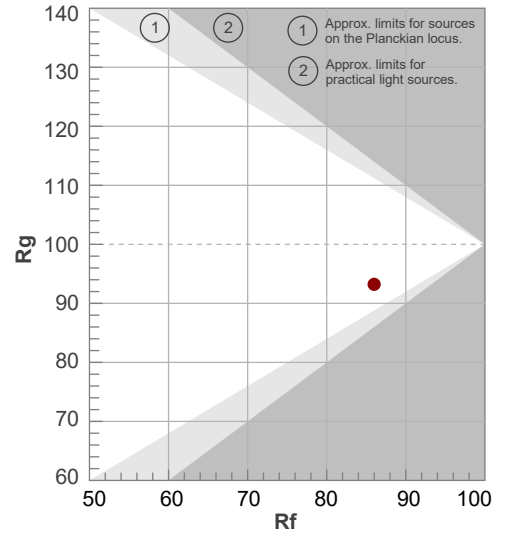
Q1	Q2	Q3	Q4	Q5	Q6	Q7	Q8	Q9	Q10	Q11	Q12	Q13	Q14	Q15
82.5	91.9	93.1	86.4	85.4	85.7	91.0	93.4	94.4	95.8	98.1	96.5	94.9	88.0	86.9



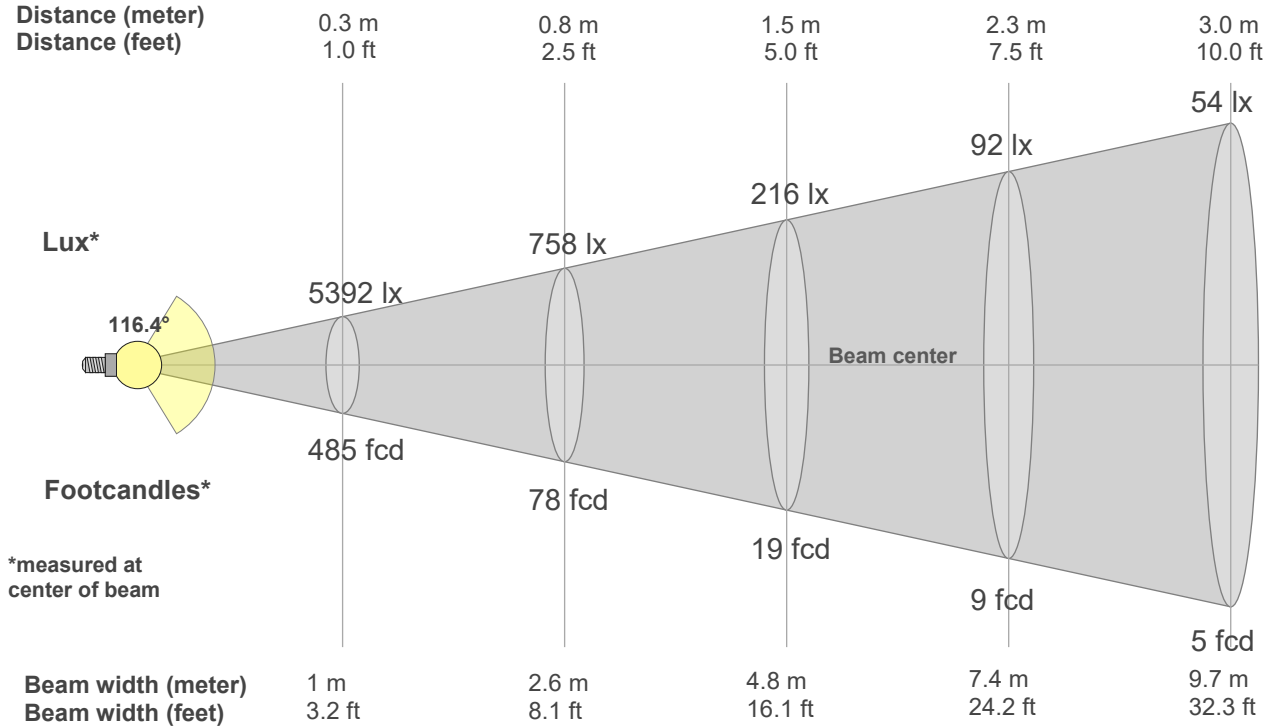
Rf 86.0
Fidelity index Rf

Rg 93.2
Gamut index Rg

Hue Bin	R _f	Shifts (%)	
		Chroma	Hue
1	86	-6%	3%
2	92	-2%	2%
3	94	-2%	0%
4	88	-6%	-4%
5	85	-11%	-3%
6	89	-8%	0%
7	85	-9%	5%
8	84	-5%	9%
9	81	-1%	15%
10	81	1%	12%
11	86	7%	7%
12	90	4%	-3%
13	84	1%	-11%
14	90	-2%	-6%
15	81	-4%	-10%
16	82	-5%	-6%



Beam Details



Beam Intensities from 1-20m

1m	2m	3m	4m	5m	6m	7m	8m	9m	10m	11m	12m	13m	14m	15m	16m	17m	18m	19m	20m
3.3ft	6.6ft	9.8ft	13.1ft	16.4ft	19.7ft	23ft	26.2ft	29.5ft	32.8ft	36.1ft	39.4ft	42.7ft	45.9ft	49.2ft	52.5ft	55.8ft	59.1ft	62.3ft	65.6ft
485lx	121lx	54lx	30lx	19lx	13lx	10lx	8lx	6lx	5lx	4lx	3lx	3lx	2lx	2lx	2lx	2lx	1lx	1lx	1lx
45.1fcd	11.3fcd	5fcd	2.8fcd	1.8fcd	1.3fcd	0.9fcd	0.7fcd	0.6fcd	0.5fcd	0.4fcd	0.3fcd	0.3fcd	0.2fcd	0.2fcd	0.2fcd	0.2fcd	0.1fcd	0.1fcd	0.1fcd

Intensities in 0° c-plane

0°	5°	10°	15°	20°	25°	30°	35°	40°	45°	50°	55°	60°	65°	70°	75°	80°	85°	90°	95°
485	483	478	468	456	439	419	395	368	337	304	267	228	187	145	102	62	29	7	7
100%	100%	98%	97%	94%	90%	86%	81%	76%	69%	63%	55%	47%	39%	30%	21%	13%	6%	1%	1%

Intensities in 90° c-plane

0°	5°	10°	15°	20°	25°	30°	35°	40°	45°	50°	55°	60°	65°	70°	75°	80°	85°	90°	95°
485	484	478	469	457	441	422	398	371	341	308	272	232	190	146	101	59	24	2	2
100%	100%	98%	97%	94%	91%	87%	82%	77%	70%	64%	56%	48%	39%	30%	21%	12%	5%	0%	0%

Intensities in 180° c-plane

0°	5°	10°	15°	20°	25°	30°	35°	40°	45°	50°	55°	60°	65°	70°	75°	80°	85°	90°	95°
485	483	478	468	456	439	419	395	368	337	304	267	228	187	145	102	62	29	7	7
100%	100%	98%	97%	94%	90%	86%	81%	76%	69%	63%	55%	47%	39%	30%	21%	13%	6%	1%	1%

Intensities in 270° c-plane

0°	5°	10°	15°	20°	25°	30°	35°	40°	45°	50°	55°	60°	65°	70°	75°	80°	85°	90°	95°
485	484	478	469	457	441	422	398	371	341	308	272	232	190	146	101	59	24	2	2
100%	100%	98%	97%	94%	91%	87%	82%	77%	70%	64%	56%	48%	39%	30%	21%	12%	5%	0%	0%

Beam angle 50%	Field angle 10%	Cutoff angle 2,5%	Intensity ratio in 120° cone	Intensity ratio in 90° cone
117°	163.3°	176.6°	76.9%	51.6%



Luminous Intensity Diagram

Unit: 0-100% of peak intensity

Main Values

Output (Total Lumen)	1473 lm
Lumen Up% / Down%	0.96% / 99.04%
Peak Intensity	486 cd
Beam Angle (50%)	117°
Beam Angle (90%)	117.5°
Beam Angle (10%)	116.4°

Cut-off Angle

Average 2,5%	176.6°
--------------	--------

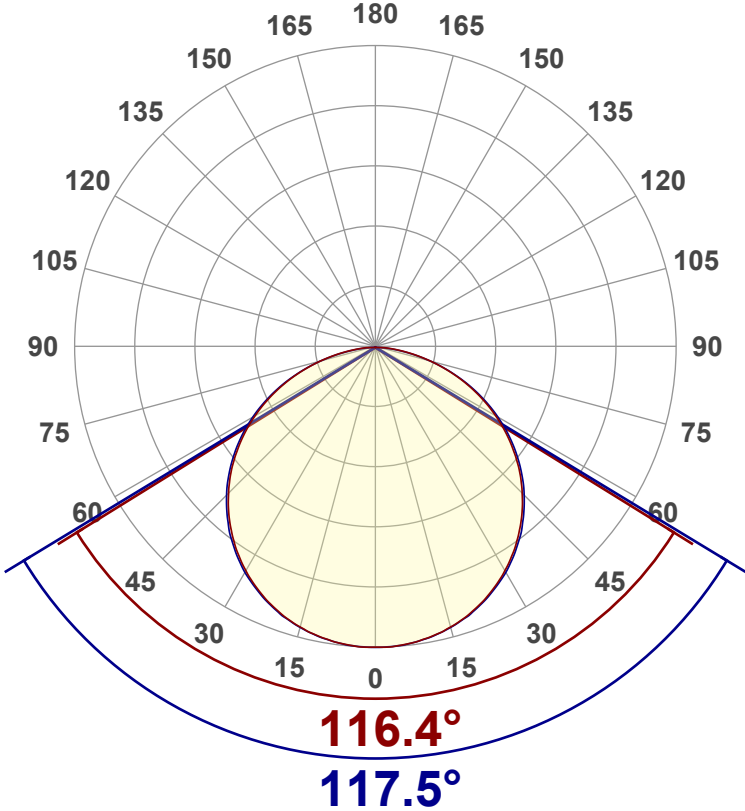
Field Angle

Average 10%	163.3°
-------------	--------

Intensity Ratio

In 120° cone	76.9%
In 90° cone	51.6%

C000-C180 C090-C270



Zonal Lumen Summary

0°-10°	10°-20°	20°-30°	30°-40°	40°-50°	50°-60°	60°-70°	70°-80°	80°-90°
46.0 lm	132 lm	203 lm	248 lm	262 lm	241 lm	187 lm	108 lm	32.0 lm
90°-100°	100°-110°	110°-120°	120°-130°	130°-140°	140°-150°	150°-160°	160°-170°	170°-180°
4.65 lm	2.56 lm	2.23 lm	2.02 lm	1.20 lm	0.667 lm	0.492 lm	0.301 lm	0.101 lm



LCS Table

BUG rating:	B1 U0 G1	
Forward light	Lumens	Lumens %
Low(0-30):	192.5	13.1%
Medium(30-60):	379.2	25.7%
High(60-80):	148.8	10.1%
Very high(80-90):	16.2	1.1%
Back light		
Low(0-30):	192.5	13.1%
Medium(30-60):	379.2	25.7%
High(60-80):	148.8	10.1%
Very high(80-90):	16.2	1.1%
Uplight		
Low(90-100):	0	0%
High(100-180):	0	0%

LCS Graph

